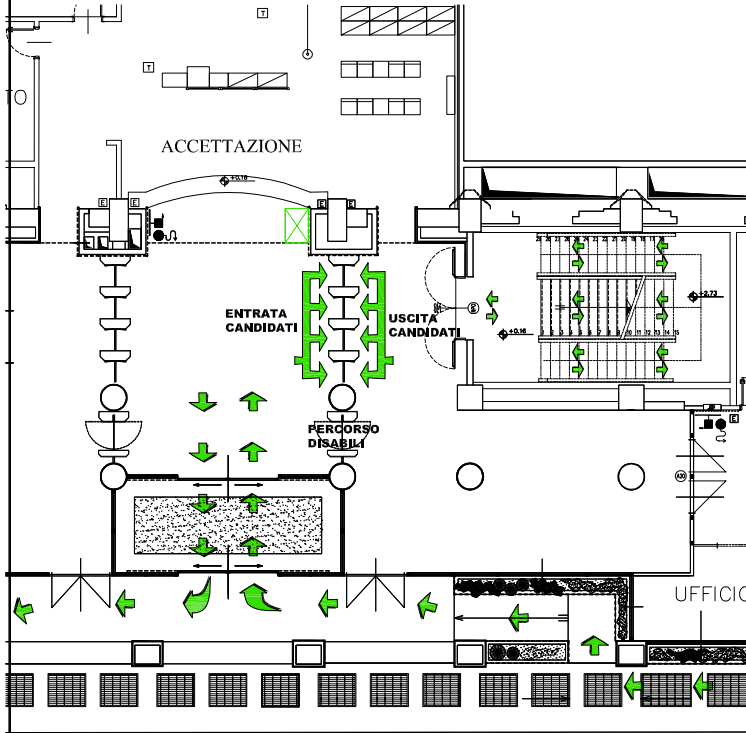
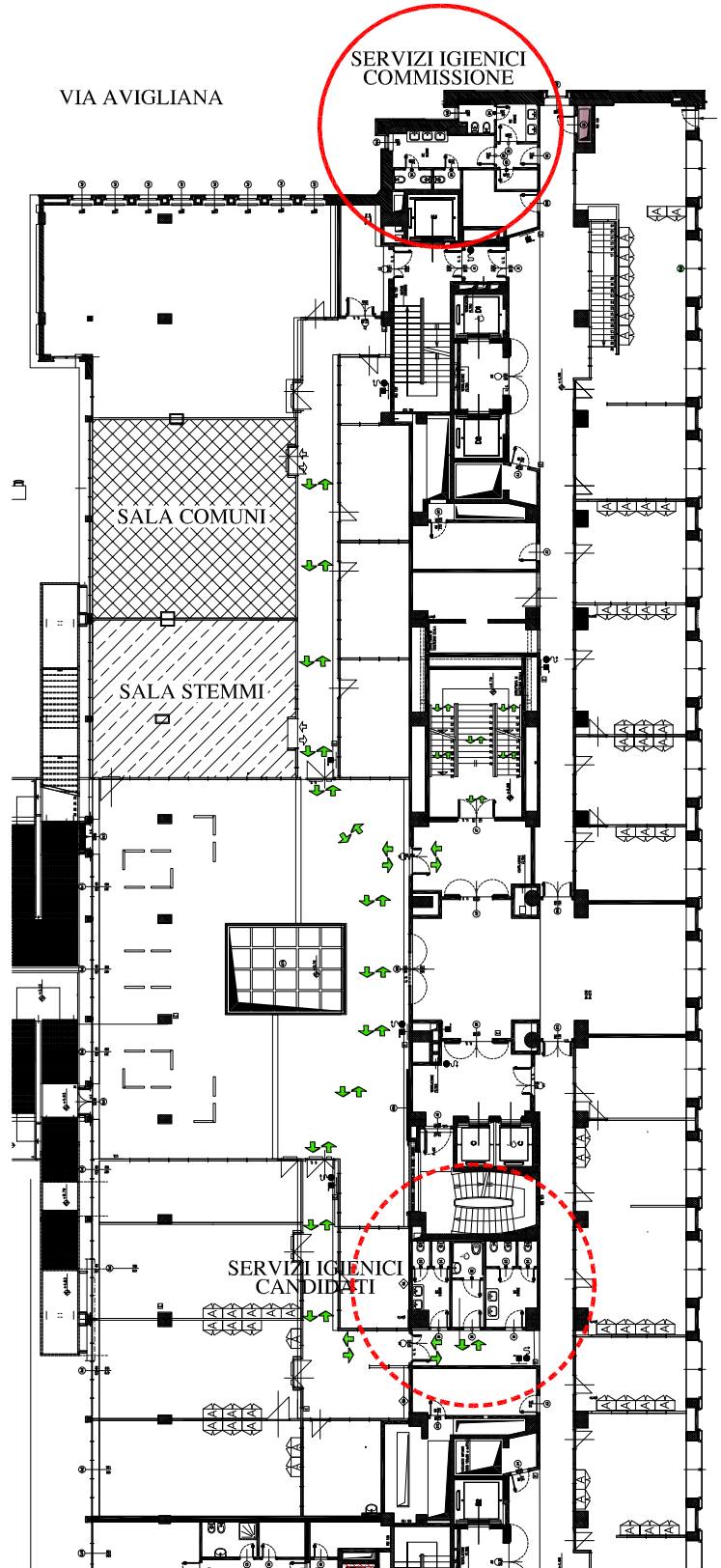


PIANO TERRENO



PIANO PRIMO



LEGENDA

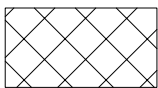


Persorsi di accesso e uscita



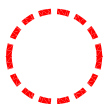
SALA STEMMI

Capienza: 15 + 2

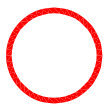


SALA COMUNI

Capienza: 15 + 2



Servizi igienici candidati



Servizi igienici commissione

SALA STEMMI

Corso Inghilterra 7 - Torino

SALA STEMMI





Capienza: 15 + 2

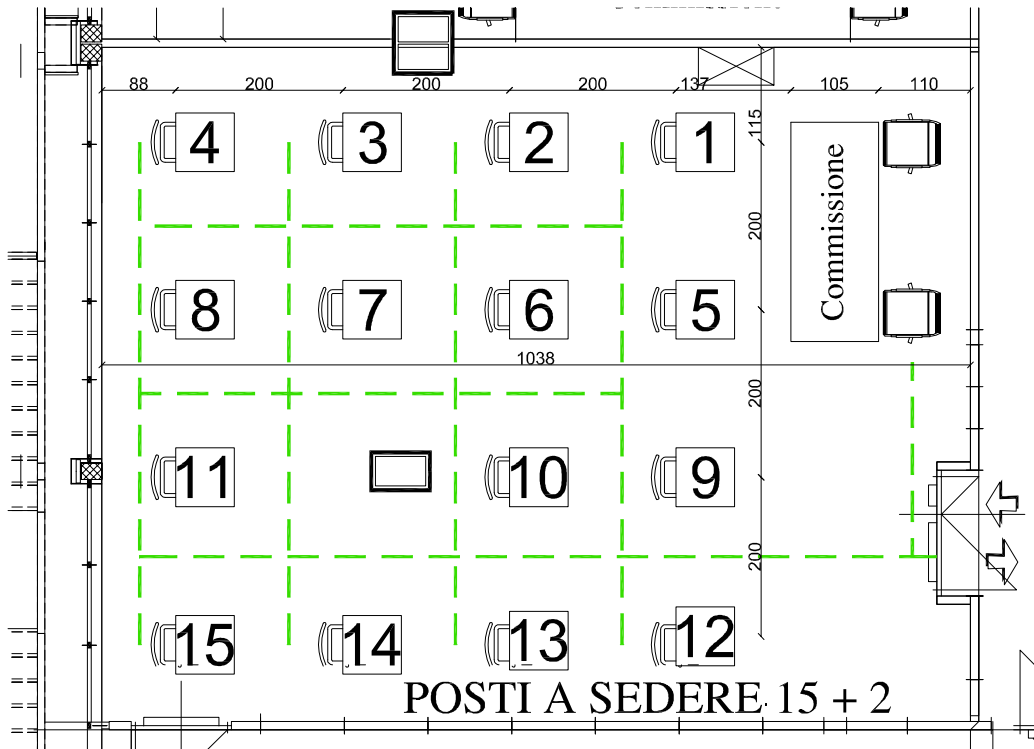
SALA COMUNI

Capienza: 15 + 2

N.B.: il rispetto delle distanze indicate andrà preliminarmente verificato in loco

LEGENDA

-  Percorso principale
-  Ingresso sala
-  Banchi
-  Tavolo commissione



SALA COMUNI

